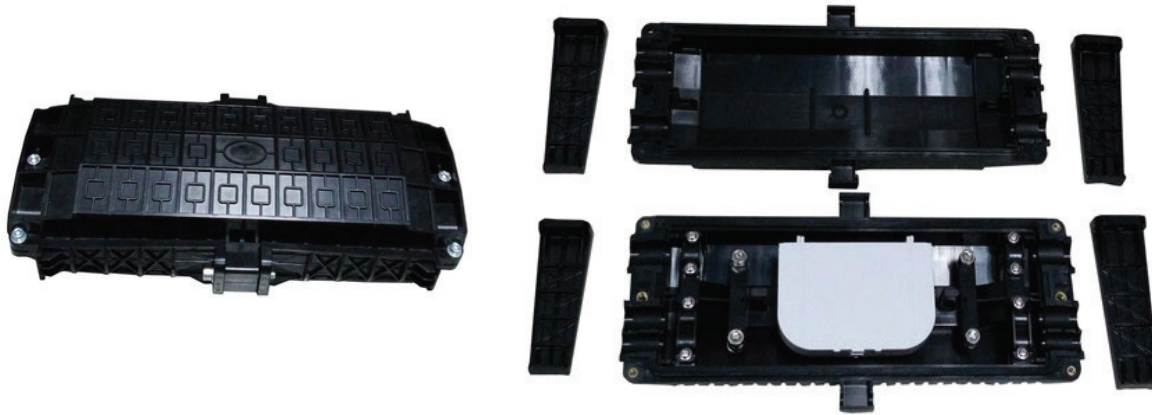


Description:

CH019 has 6 fiber cable in-out round ports for fiber splicing and protection. It is widely applied to the splicing and distributing variable optical cables. It is made of the high-quality ABS and with the mechanical sealing structure filled with the sealing material. It can be opened after sealing and can be reused without changing sealing material.



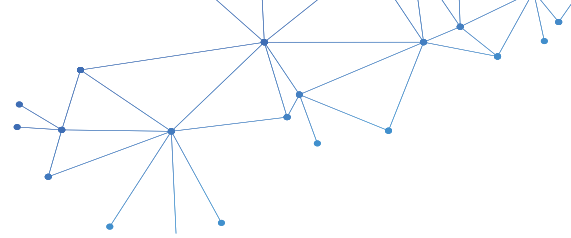
Application: Aerial -hanged, Wall-mounting

Specification:

Dimension	400*200.2*107mm
Cable diameter	2 port Φ 22mm, 2 port Φ 20mm, 2 port Φ 16mm
Cable entry ports	3 in 3 out
Max. Capacity of fiber splice tray	4pcs (6 slots per tray)
Max. Capacity	24cores/ 48cores (2 fibers in one slot)

Accessories:





Drawings (mm):

