

Overview:

Pen type VFL are compact but powerful Visual Fault Locator, with an output power up to 30mw, could be used to locate bends & breaks in jacked or bare fiber within 30Km. It could also be used to identify the connectors in patch panels and identify the fibers during splicing operation.

pen-type red light emitting device by using 650nm semiconductor laser to emit red light, stable, and optical interface is connected into the multimode and single-mode optical fiber cable, optical fiber jumper fault detection function. Optical engineering construction, network maintenance, fiber optical devices indispensable production and research tools

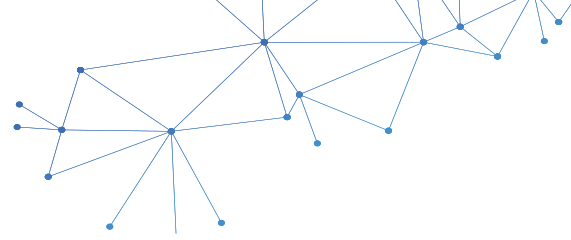


Specifications:

Wavelength	650nm±10nm
Light source	FP-LD laser
Output power	1mw, 10mw, 20mw, 25mW, 30mW, 50mW (optional)
Connector	2.5mm universal adapter
Working mode	CW or 2Hz modulation
Operating temperature	0~+60 °C
Storage temperature	-25~+70 °C
Power	2pcs AA battery
Working hours	≥10

Fe
atu
res:
2.5
mm
uni

versal connector
2Hz glint or continuous optput
Operates either in CW or Glint



Small size, easy to field test
High quality pen type visual fault locator
Easy identification of fiber break,bend, you can protect the fiber layer
To-end fiber identification
Complete mechanical connecting point detection and optimization
Crash-proof and dust-proof design for laser head
Portable and rugged, easy to use
Possess a power saving mode, the instrument automatically shut off the power after idle for 10 minutes.

Application:

- Telecom, CATV engineering and maintenance
- integrated wiring construction and maintenance
- The production and research of optical devices
- other optical engineering

Packaging informations:

1pcs/inner box, 20pcs/carton

