

Fiber optic terminal box OTB-0212 is a box for fiber terminal distribution in optical fiber transmission and communication network. It can be 12 fibers splicing, protection and distribution.



Features

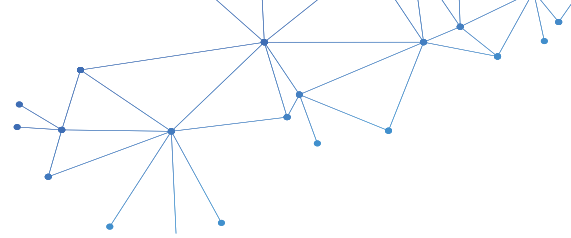
- Material: ABS plastic.
- Can accommodate 1x4,1x8 PLC splitter.
- Rainfall resistant, IP65 outdoor using.
- Can load 12pcs LC, FC, ST, SC ... adapters.
- Wall mounting and pole mounting application.
- 2pcs cable entry ports with M20 cable gland (Max. cable diameter 12mm)
- 12pcs exit ports for FTTH drop cable.

Specification:

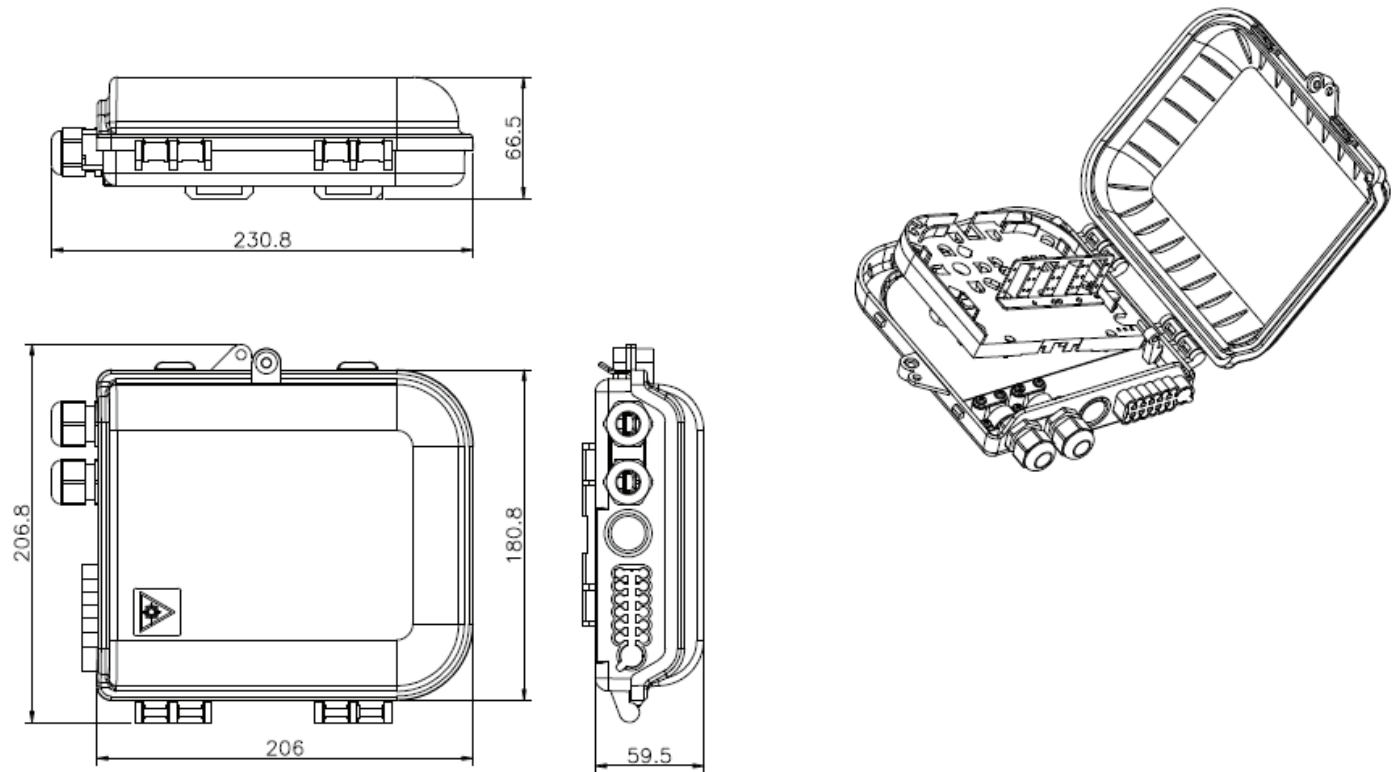
Model	Capacity	Dimension	Remark
OTB-0212	12 ports	206.8x230.8x66.5mm	1 rotary splice tray

Application

- FTTH access network.
- Telecommunication Networks
- CATV Networks
- Data communications Networks



Drawings (mm):



Accessories:

