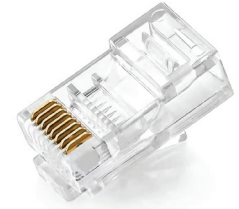


## RJ45 CATEGORY 5e, 6, 6A, 7 CONNECTORS

Our comprehensive range of high-performance connectors is specifically designed to cater to a broad spectrum of present and emerging applications. Our connectors come in Category 5e, 6, 6A, and 7, and are renowned for their exceptional longevity and reliability, ensuring uninterrupted connectivity even in the most challenging environments. Our product range includes plugs suitable for round cables with stranded or solid conductors, ranging from 22 to 26 AWG. These connectors are perfect for patch-cord termination.



## COMPLIANCE

IEEE 802.af, IEEE 802.3at for PoE & PoE+ applications. ANSI/TIA-568-C.2 and ISO/IEC-11801 (2nd Edition), EN50173-2, IEC 60603-7-3



## HIGHLIGHTS

RJ45 Category 5e, 6, 6A, and 7 Connectors (or) plugs works with most RJ45 crimping tools



## SPECIFICATION

Material	PC/ABS + Pure Copper
Gold Plate	1U to 50U
Type	RJ45 8P8C
Temperature Range	-40°C~ +70°C
Colour	Transparent
Application	Networking
Package	100 PCS/BOX

## ORDER INFORMATION

Part Number	Description
CC-RJ45-C6-U	CABCOMM Category 6 UTP RJ45 Connector Gold-plated
CC-RJ45-C6-F	CABCOMM Category 6 FTP RJ45 Connector Gold-plated
CC-RJ45-C7-F	CABCOMM Category 6A & 7 Shielded RJ45 Connector Gold-plated